

## Vibration feeders

AAE manufactures a complete range of state-of-the-art vibration feeders. These feeding systems distinguish themselves in the market due to a number of unique properties:

- 5 standard drivers and 6 different bowl configurations.
- Steel leaf springs that have undergone a specific treatment (shot peening) resulting in extreme durability and reliability.
- Bottom- and top plates from cast iron (GGG50); making the AAE vibration feeder sturdy and very stable.
- Solid construction, load-independent and suitable for heavy loads as well (for instance larger metal parts).
- Frequency controlled driver.
- Available in clockwise (CW) and counter-clockwise (CCW) versions, making a compact set up of two lane feeding systems possible.
- The driver is coated in RAL6016 (green). Other colors are available upon request.
- The bowl is completely made in stainless steel.
- The bowl is a fully welded construction, so no chance of parts loosening themselves due to the vibrations.
- AAE vibration feeders are supplied with a manual in the English language and comply with CE regulations.

To optimize the performance of the vibration feeder, the bowl can be coated with various materials.

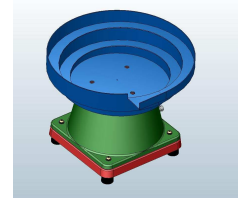
AAE is not just a supplier of vibration feeders. Thanks to our experience in mechatronics we execute all engineering, manufacturing and specific fine tuning of vibration feeders under one roof.

Fine tuning of the vibration feeder largely determines the performance and the reliability of the feeding system. We modify and fine-tune each feeder and its bowl to make it a 100% fit to the specific product.

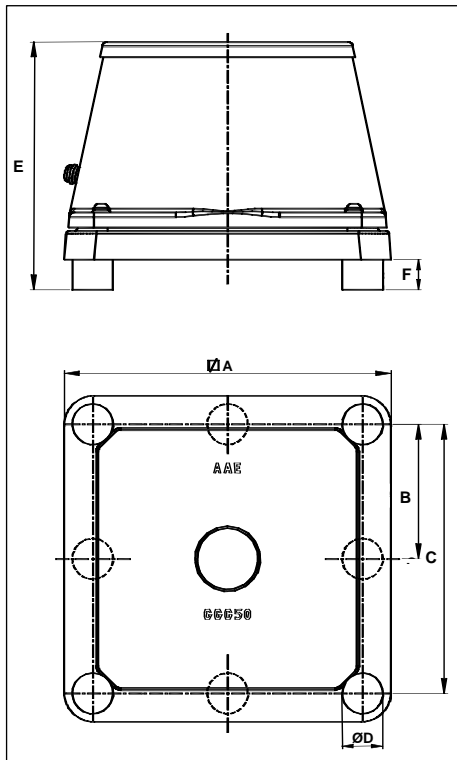


In the table below, please find the possible combinations of bowls and drivers for the AAE vibration feeders. (the combinations marked by the black dots are to be favored.)

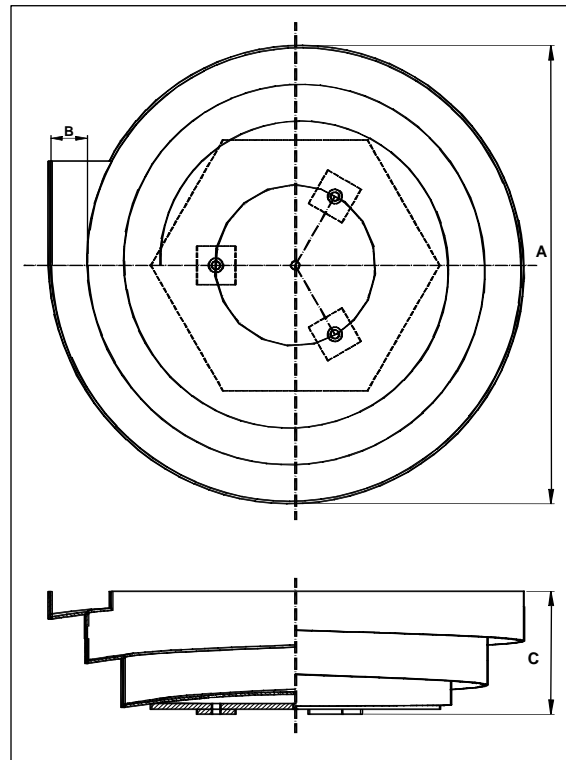
Bowl \ Driver type	14"	20"	24"	30"	36"	48"
F30	●					
H30	○	●				
J30		○	●			
K30			○	●	●	
L30				○	○	●



## Technical data



Main dimensions driver, see table 1



Main dimensions bowl, see table 2

Driver type	A (mm. x mm.)	B (mm. x mm.)	C (mm. x mm.)	Ø D (mm.)	E (mm.)	F (mm.)	Weight (kg.)
F30	236	-	178	25.5	175	25	22
H30	324	-	267	40	246	30	52
J30	400	-	343	40	280	30	110
K30	526.5	235	470	40	346	30	185.5
L30	628	279.5	559	40	358	30	300

Table 1 : main dimensions drivers

Bowl	Ø A <sup>(1)</sup> (mm.)	B (mm.)	C (mm.)	Capacity <sup>(2)</sup> (liter)	Weight <sup>(3)</sup> (kg.)
14"	335	25	80	5	4.2
20"	475	38	127	17.5	10
24"	574	45	155	25	17.5
30"	726	50	179	51	33.5
36"	916	64	204	96	53
48"	1162	76	262	202	107

Table 2 : main dimensions bowls

(1) Outer diameter may vary, depending on product specific modifications.

(2) Capacity is an indication, depending on product specific modifications.

(3) Weight is an indication, depending on product specific modifications.